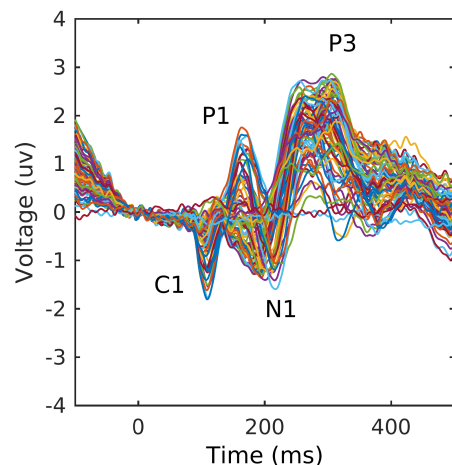
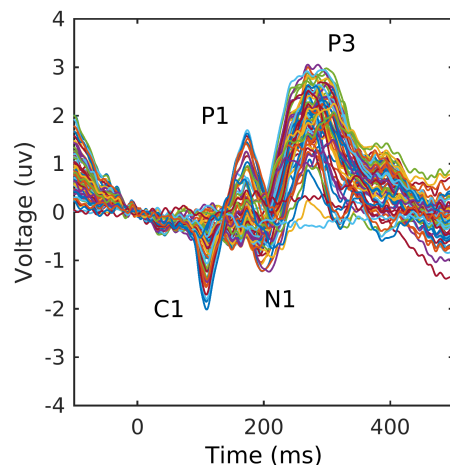


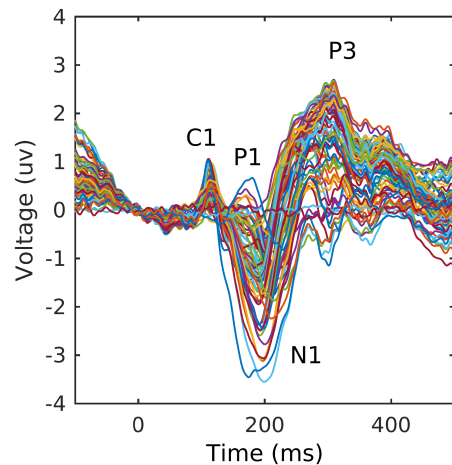
Electrode activity at upper left



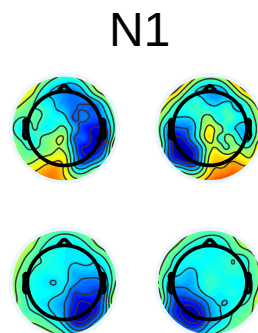
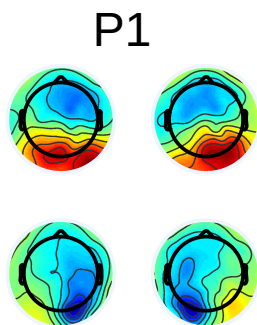
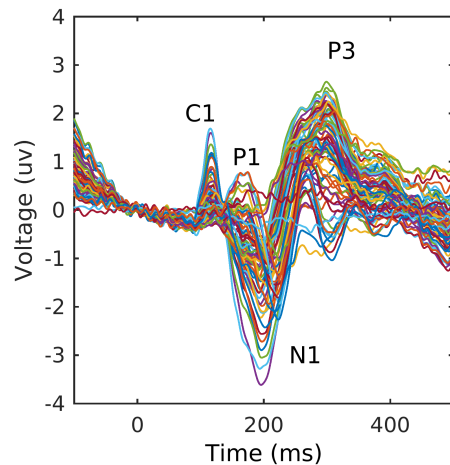
Electrode activity at upper right



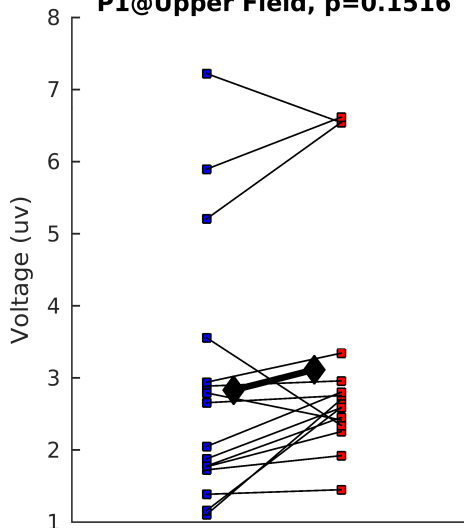
Electrode activity at lower left



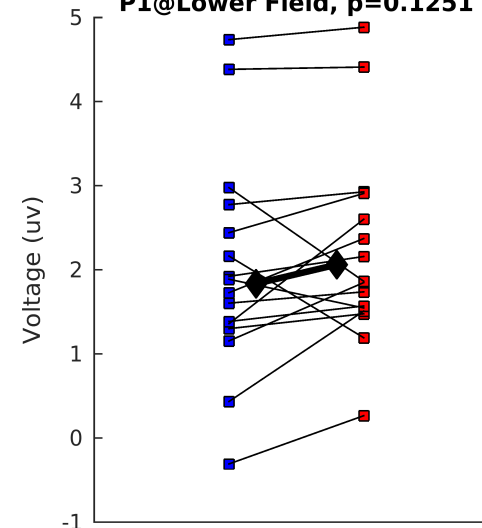
Electrode activity at lower right



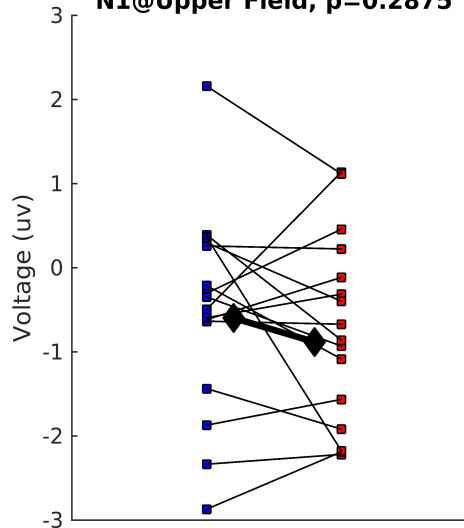
P1@Upper Field, $p=0.1516$



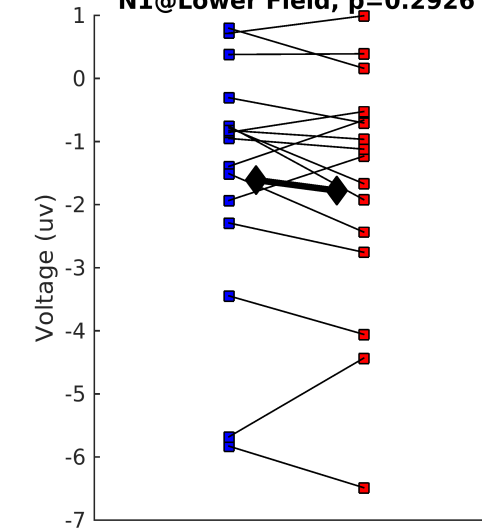
P1@Lower Field, $p=0.1251$



N1@Upper Field, $p=0.2875$



N1@Lower Field, $p=0.2926$



While P1 and N1 are typically affected by 'attentional' manipulations, e.g. spatial exogenous cuing, they are unaffected by orientation probability